

BLUEstain™ 2 Protein Ladder

Cat. No. P008

- 3 µl or 5 µl per loading for clear visualization during electrophoresis
- 1.5-2.5 µl per well for general Western transferring on 15-well or 10-well mini-gel, respectively.
- Apply more for thicker (>1.5 mm) or larger gel.

Description

The BLUEstain™ 2 Protein Ladder is a three-color protein standard with 13 pre-stained proteins covering a wide range molecular weights from 3.5 to 245 kDa. Proteins are covalently coupled with a blue chromophore except for two reference bands (one green and one red band at 25 kDa and 75 kDa respectively) when separated on SDS-PAGE (Tris-glycine buffer).

The BLUEstain™ 2 Protein Ladder is designed for monitoring protein separation during SDS-polyacrylamide gel electrophoresis, verification of Western transfer efficiency on membranes (PVDF, nylon, or nitrocellulose) and for approximating the size of proteins. The ladder is supplied in gel loading buffer and is ready to use. Do not heat, dilute or add reducing agent before loading.

Contents

Approximately 0.1-0.4 mg/ml of each protein in the buffer (20mM Tris-phosphate, pH 7.5 at 25°C), 2% SDS, 0.2mM Dithiothreitol, 3.6M Urea, and 15% (v/v) Glycerol).

Quality Control

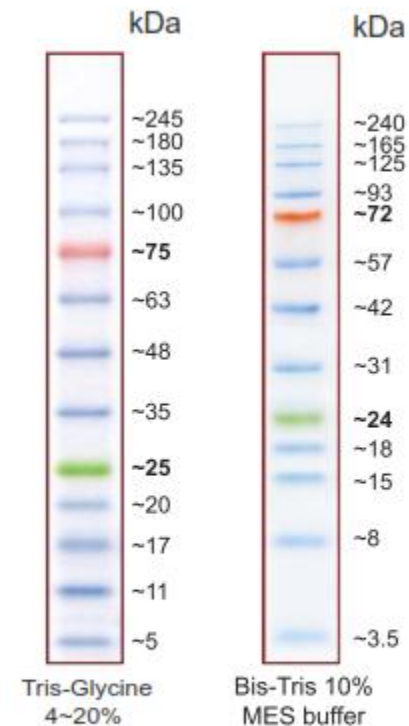
Under suggested conditions, BLUEstain™ 2 Protein Ladder resolves 13 major bands in polyacrylamide gel with appropriate buffers and after Western blotting to nitrocellulose membrane.

Storage

Stable for up to 3 months at 4°C. For long term storage, store at -20°C.

Guide for Molecular Weight Estimation (kDa)

Migration patterns of BLUEstain 2 Protein Ladder in different electrophoresis conditions are listed below:



Note. The apparent molecular weight (kDa) of each protein has been determined by calibration against unstained protein standards; supplemental data should be considered for more accurate adjustment in different electrophoresis conditions.

All products are for research use only.

Caution: Not intended for human or animal diagnostic or therapeutic uses.

Gold Biotechnology

St. Louis, MO

Web: www.goldbio.com

Ph: (314) 890-8778

email: contactgoldbio86@goldbio.com